



Hard Chess Puzzle # 0107

By

G Bud Games
<https://gbud.in>

January 16, 2022

Contents

Hard Chess puzzle # 0107 - Mate in 3 moves	3
Hard chess puzzle 0107	3
Solution to hard chess puzzle 0107	4
Solution 1	4
Right moves for the solution to the hard chess puzzle 0107	7
Explanation for the moves	7
Categories of hard chess puzzle 0107	8
hard chess puzzle 0107 chart	8
How to view the solution to hard chess puzzle 0107	10
How to get help for moves in the hard chess puzzle 0107	11
Play chess for free	12

List of Figures

1	Solve this hard chess puzzle 0107. Mate in 3 moves @ https://gbud.in/g19lv73	3
2	Solve this hard chess puzzle online with solution @ https://gbud.in/g19lv73	3
3	Initial board position of hard chess puzzle 0107	4
4	Qc4+	5
5	b3	5
6	Qc2+	6
7	Ka1	6
8	Qb1#	7
9	hard chess puzzle 107 chart 1	8
10	hard chess puzzle 107 chart 2	9
11	hard chess puzzle 107 chart 3	9
12	hard chess puzzle 107 chart 4	10
13	Click the solution button to view solutions @ https://gbud.in/g19lv73	10
14	Click the help button to get help on next move @ https://gbud.in/g19lv73	11
15	Solve more hard puzzles @ https://gbud.in/chshdpz	11
16	Solve other puzzles @ https://gbud.in/chsgppz	11
17	Play chess online for free. Solve puzzles and play with friends	12
18	Solve this puzzle online by scanning this QR code or go to the link below	13

Hard Chess puzzle # 0107 - Mate in 3 moves

Solve this hard chess puzzle and improve your chess games through improvement of your chess strategies and chess tactics. This hard puzzle is a subset of [kids games](#).

Puzzle No : 0107

Difficulty level : hard

Description : Mate in 3 moves

Next Move : Black

Player level : Advanced

Short URL for puzzle : <https://gbud.in/g19lv73>

Hard chess puzzle 0107

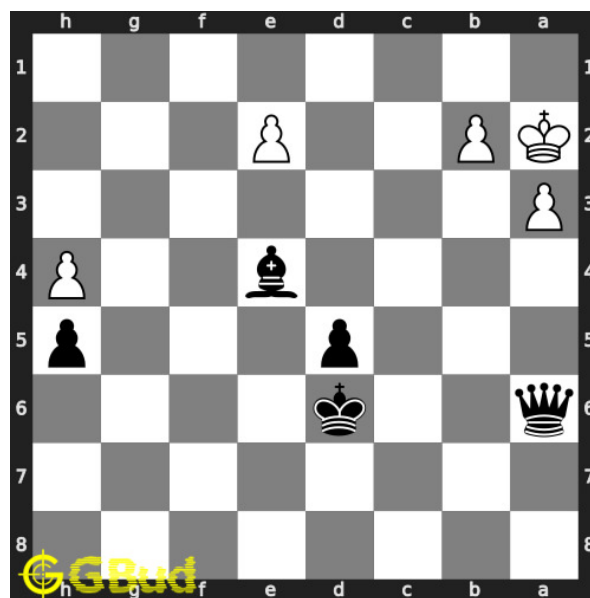


Figure 1: Solve this hard chess puzzle 0107. Mate in 3 moves @ <https://gbud.in/g19lv73>



Figure 2: Solve this hard chess puzzle online with solution @ <https://gbud.in/g19lv73>

Dont forget to check out [chess puzzles](#), [easy chess puzzles](#), [medium chess puzzles](#), [hard chess puzzles](#) and [chess puzzles collections](#) .

Solution to hard chess puzzle 0107

At this puzzle, next [move](#) is by [Black](#). The objective of the puzzle is to mate in 3 moves.

See the interactive solution at the [puzzle page](#)

Solution 1

Initial board position This is the initial board position of hard chess puzzle 0107.

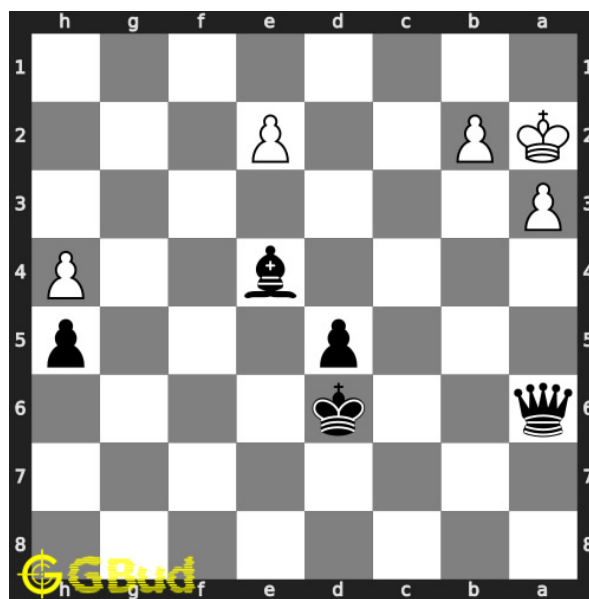


Figure 3: Initial board position of hard chess puzzle 0107

Move 1 Move by black

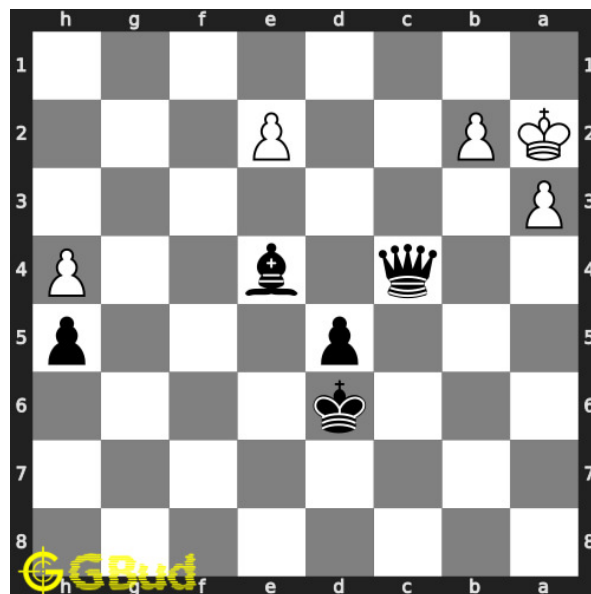


Figure 4: Qc4+

your **queen moves** to **c4** and gives **check** to opponent.

Move 2 Move by white

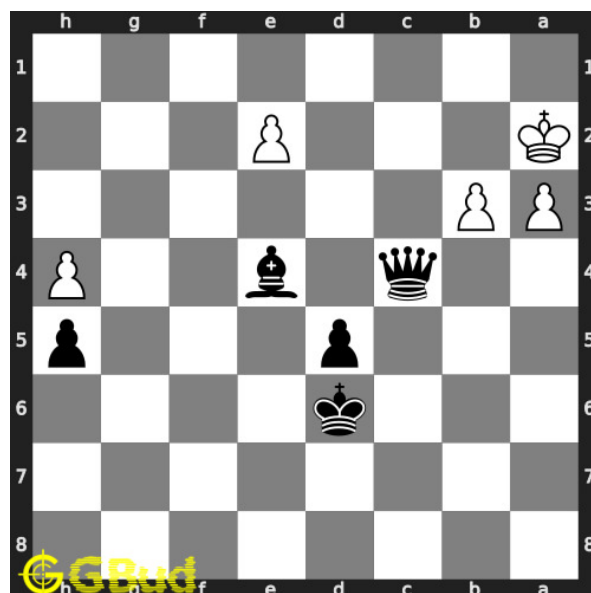


Figure 5: b3

the **pawn** in **b file moves** forward to **b3** and blocks the **check** threat.

Move 3 Move by black

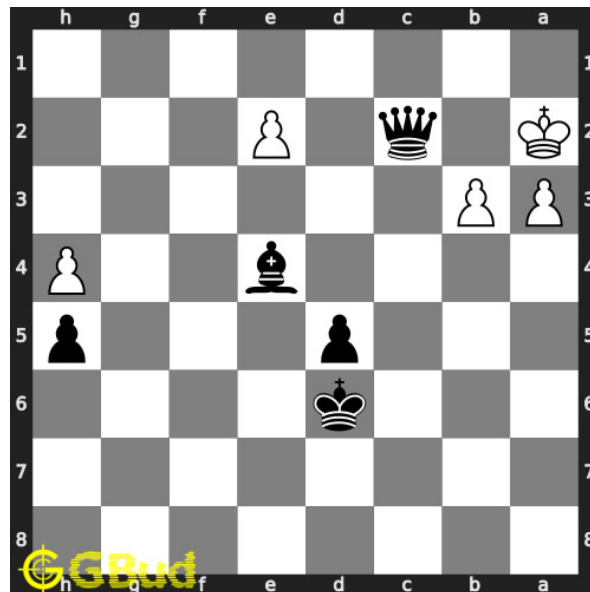


Figure 6: Qc2+

your [queen moves](#) to [c2](#) and gives next [check](#) to opponent.

Move 4 Move by white

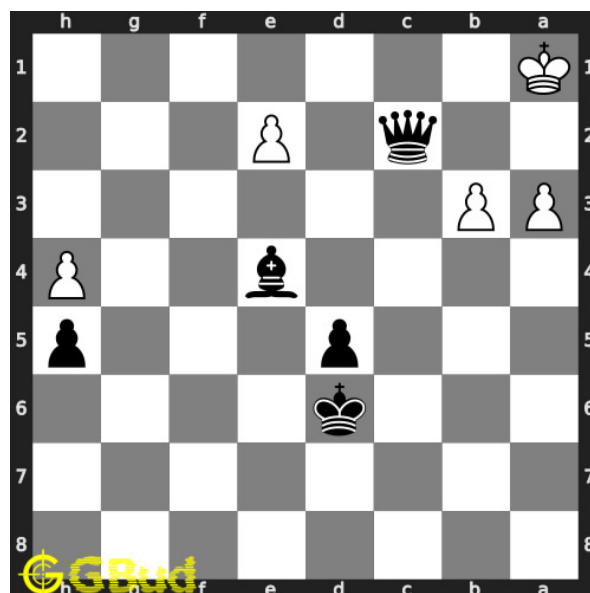


Figure 7: Ka1

opponent's [king moves](#) to [a1](#) as it is blocked by friendly [pawns](#).

Move 5 Move by black

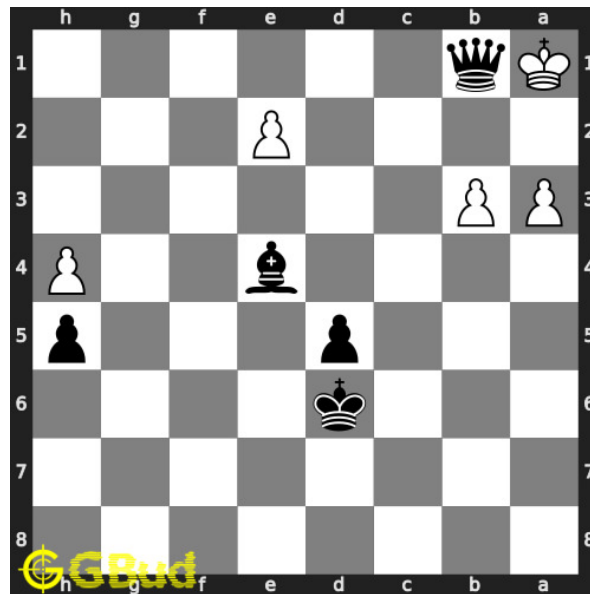


Figure 8: Qb1#

your **queen** moves to **b1** and **checkmate**. opponent's **king** can't **capture** your **queen** since it is supported by the **bishop** in **battery** formation. this is how you can **mate** in **3 moves**.

Right moves for the solution to the hard chess puzzle 0107

Based on the objective of the puzzle, you have to make the right moves. Following are the right moves

1. Qc4+, Qc2+, Qb1#

Explanation for the moves

1. Qc4+ - Your queen moves to c4 and gives check to opponent.
2. b3 - The pawn in b file moves forward to b3 and blocks the check threat.
3. Qc2+ - Your queen moves to c2 and gives next check to opponent.
4. Ka1 - Opponent's king moves to a1 as it is blocked by friendly pawns.
5. Qb1# - Your queen moves to b1 and checkmate. Opponent's king can't capture your queen since it is supported by the bishop in battery formation. This is how you can mate in 3 moves.
6. For right move - You have had a successful mate in 3 moves. Good strategy
7. For wrong move - You should have used the battery of queen and bishop to win the game. Try again

Categories of hard chess puzzle 0107

This hard chess puzzle falls in these categories.

1. [Hard chess puzzles](#)
2. [Mate in 3 puzzles in chess](#)
3. [Endgame puzzles in chess](#)
4. [Battery puzzles in chess](#)
5. [Strategy puzzles in chess](#)
6. [Queen puzzles in chess](#)

hard chess puzzle 0107 chart

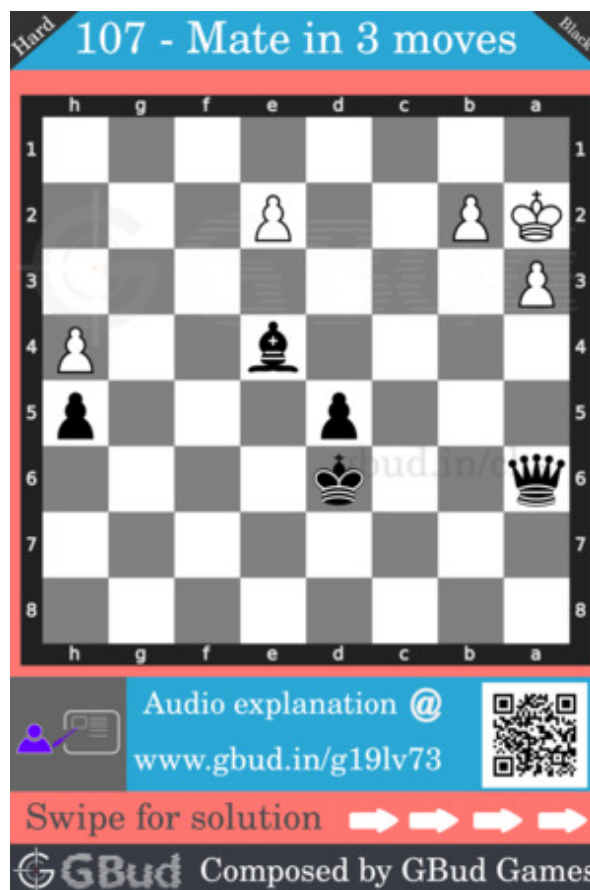


Figure 9: hard chess puzzle 107 chart 1



Figure 10: hard chess puzzle 107 chart 2

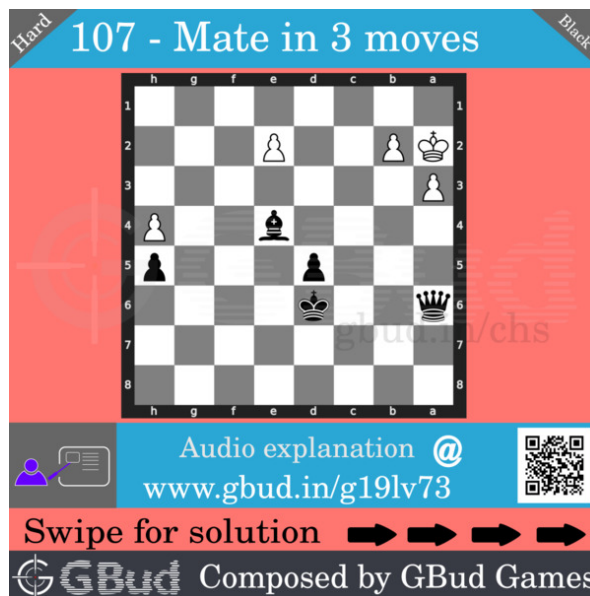


Figure 11: hard chess puzzle 107 chart 3

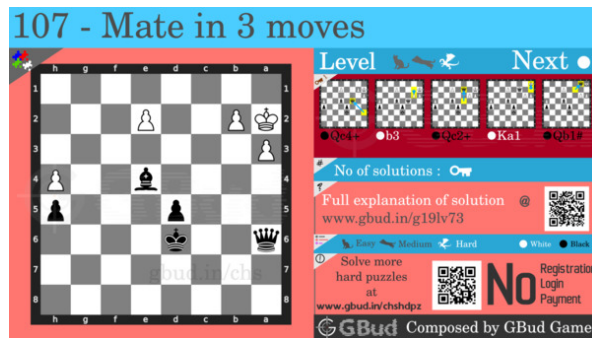


Figure 12: hard chess puzzle 107 chart 4

How to view the solution to hard chess puzzle 0107

To view the [solution to this puzzle](#), follow the steps given below

1. Go to the [puzzle page](#)
2. Click the solution button (Key as shown [below](#)) to view the solution



Figure 13: Click the solution button to view solutions @ <https://gbud.in/g19lv73>

How to get help for moves in the hard chess puzzle 0107

To get help or the possible next moves in the puzzle, , follow the steps given below

1. Go to the [puzzle page](#)
2. Click the help button (exclamation mark as shown [below](#)) to get help or suggestion on next possible [move](#)



Figure 14: Click the help button to get help on next move @ <https://gbud.in/g19lv73>



Figure 15: Solve more hard puzzles @ <https://gbud.in/chshdpz>



Figure 16: Solve other puzzles @ <https://gbud.in/chsgppz>

Play chess for free

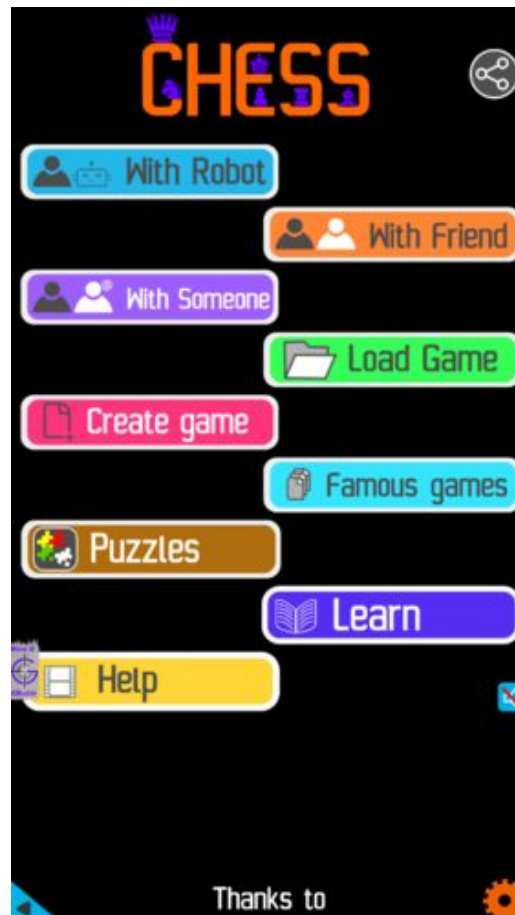


Figure 17: Play chess online for free. Solve puzzles and play with friends

Play chess for free at <https://gbud.in/chs>

We present you a platform to play chess online with friends for free. No need to install any app. You can play chess for free without registration or login.

Simple. You can do several chess related activities.

1. solve chess puzzles
2. learn about chess
3. play chess with computer
4. play chess with friend
5. create your own chess games

6. [fen viewer](#)
7. [fen editor](#)
8. [fen generator](#)
9. [pgn viewer](#)
10. [chess board editor](#)
11. [view famous chess games.](#)



Figure 18: Solve this puzzle online by scanning this QR code or go to the link below

<https://gbud.in/g19lv73>

Read the latest article on Hard Chess puzzle # 0107 - Mate in 3 moves by scanning this QR code or click the link

Previous article : « [Hard Chess puzzle # 0106 - Mate in 3 moves](#)

Next article : [Hard chess puzzles](#) »

[Back to top](#)

[Contact Us](#)